

Fort Lee



Joint Land Use Study



2013 Fort Lee Joint Land Use Study (JLUS) Project Summary

The Crater Planning District Commission, located in Petersburg, in conjunction with Prince George County, Chesterfield County, Dinwiddie County and the cities of Colonial Heights, Hopewell and Petersburg, Virginia, have joined together to prepare the Fort Lee Joint Land Use Study surrounding the Fort Lee Post.

The Fort Lee Joint Land Use Study (JLUS) planning process identified locations where land use conflicts between the civilian population and the military installation are presently occurring or are likely to occur in the future. Recommendations for compatible land use have been proposed and will be recommended to all of the participating local governments such as Prince George County.

The Joint Land Use Study began back in November 2012 and is scheduled to be completed by December 2013. Up to this point, Benchmark Consulting has held meetings around the region with local officials and local planning staff members at Crater Planning or at various public meetings such as in Petersburg, Hopewell and in Prince George County. The JLUS Project will enter the final phase in October 2013 with the completion of the final draft of the JLUS Plan.

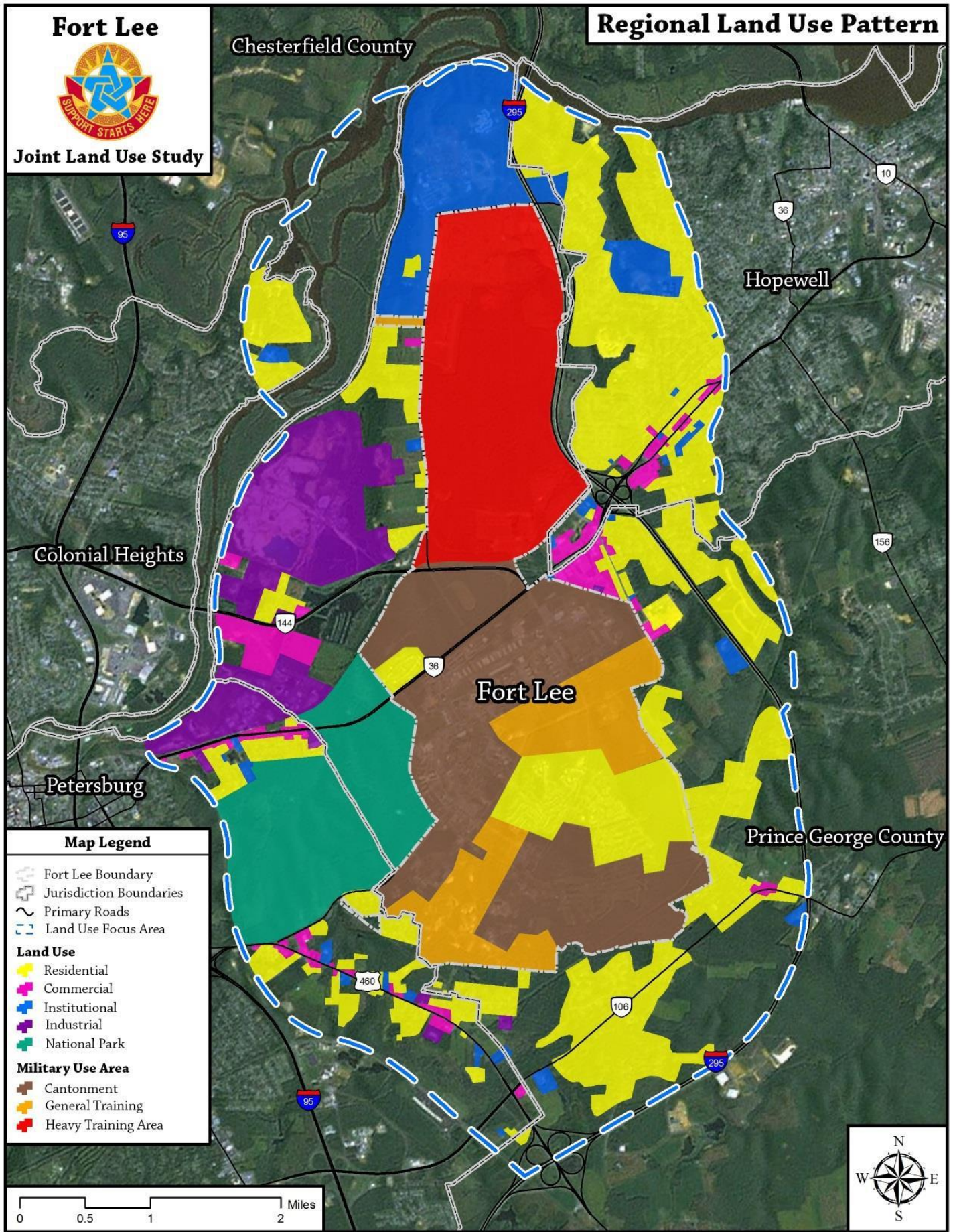
For additional information on the JLUS visit www.fortlee-jlus.com

Fort Lee



Joint Land Use Study

Regional Land Use Pattern



Map Legend

- Fort Lee Boundary
- Jurisdiction Boundaries
- Primary Roads
- Land Use Focus Area
- Land Use**
 - Residential
 - Commercial
 - Institutional
 - Industrial
 - National Park
- Military Use Area**
 - Cantonment
 - General Training
 - Heavy Training Area

